

VICTORY TRIM TABS – **TIPS AND GUIDELINES** – INSTATRIM

INSTALLATION IS BEST ACCOMPLISHED WITH THE HELP OF A SECOND PERSON

The following literature is meant to serve as a guideline only. Since there are many 'unique' InstaTrim kits in operation it may become necessary to deviate somewhat from these guidelines to suit your own application.

The InstaTrim ram is a relatively short device. It is absolutely necessary to utilize an upper standoff bracket to maintain proper geometry when using a Victory performance trim tab.

THE ORIGINAL INSTATRIM PLASTIC RAM BRACKETS WILL NOT BE REUSED IN YOUR INSTALLATION

The Victory upper standoff bracket was **not** designed to reuse the original InstaTrim upper ram mount holes, but rather, 'conceal' them. Filling and fairing the original holes is recommended but sealing with a suitable polyurethane (ie. 3M 5200) is also an appropriate method in providing a watertight seal. The InstaTrim hydraulic hose fits conveniently within the upper standoff bracket and may protrude through the upper relief designed into the bracket depending on your original configuration.

It is necessary to rotate the InstaTrim ram 180 degrees before mounting to the upper standoff bracket. (see Fig. A) This can be accomplished by loosening the hose clamp (if a 'worm' style hose clamp is used) and while holding the hose/clamp assembly with (soft jaw) pliers, rotate the ram a full 180 degrees *without* removing hose. (if your InstaTrim kit utilizes a 'crimp' style clamp, please call us for additional 'tips and tricks')

Upper standoff bracket position relies on the clearance obtained between a straight edge placed along the bottom of your hull and the tip of the tab when installed. (see Fig. E)

In most cases the Victory bolt pattern will be identical to the original InstaTrim bolt pattern. In *some* cases it will be necessary to drill an additional upper row of mounting holes. (ALL Victories utilize two evenly spaced rows of mounting holes for additional strength.

PLEASE FEEL FREE TO CALL THE FACTORY WITH ANY
INSTALLATION QUESTIONS OR CONCERNS, WE'RE ALWAYS
HAPPY TO HELP!

**MARTINIBOAT TECH LINE 7AM- 7PM MON.- FRI.
1 519 887 8282**

VICTORY TRIM TABS – **INSTALLATION/ RETROFIT** -- INSTATRIM

INSTALLATION IS BEST ACCOMPLISHED WITH THE HELP OF A SECOND PERSON

- 1) Remove original trim tabs and plastic upper brackets from actuators. Suspend actuators on hydraulic hoses *without* disconnecting.
- 2) Rotate the actuator 180 degrees. (see Fig. A) This is most easily accomplished by loosening the hose clamp, (if equipped) and while gripping the actuator, gently turning the assembly with a pair of pliers while leaving the hose attached to the actuator. If your actuators employ a 'crimp' style clamp please contact MMDI for additional instructions.
- 3) Using two outer mounting holes (and the supplied screws), temporarily mount the Victory trim tab and mark any new holes.

AT THIS TIME CHECK CLEARANCE BELOW TRIM TAB HINGE 'BARREL' TO ENSURE THERE IS A MINIMUM CLEARANCE OF 1/8" AND A MAXIMUM OF 1/2" WHEN MEASURED FROM THE BOTTOM OF THE HULL.

If clearances fall within the recommended guidelines above remove the tab and drill these holes to the specified depth and diameter. Next, drill the outer gelcoat/fiberglass *SKIN ONLY* of the *same* holes to allow a larger screw (supplied) to be used without 'chipping' the gelcoat. (see Fig. B) **DO NOT ENLARGE THESE HOLES BEYOND THE FIBERGLASS SKIN** which generally measures between 3/16"- 3/8" thick.

- 4) Using a carpenters' square and a felt tip pen, mark the centerline of the trim tab to center the upper standoff bracket. (see Fig. C)
- 5) Again, temporarily attach the trim tab plates (using two outer screws) to the transom.
- 6) Attach actuators to the Victory trim tab mounts while supporting the tip of the tab to prevent stress on the hydraulic hoses.
- 7) Attach actuators to the upper standoff bracket allowing them to 'self-center' on the bolt (see Fig.D) and gently hold standoff bracket against the transom. 'Center' the bracket on line created in step #4. Next, while using a straight edge placed along the bottom of the hull (see Fig.E) and protruding out underneath the trim tab, ensure that a clearance of 1 1/2"- 1 3/4" has been achieved **BEFORE** marking the upper standoff bracket mounting holes.

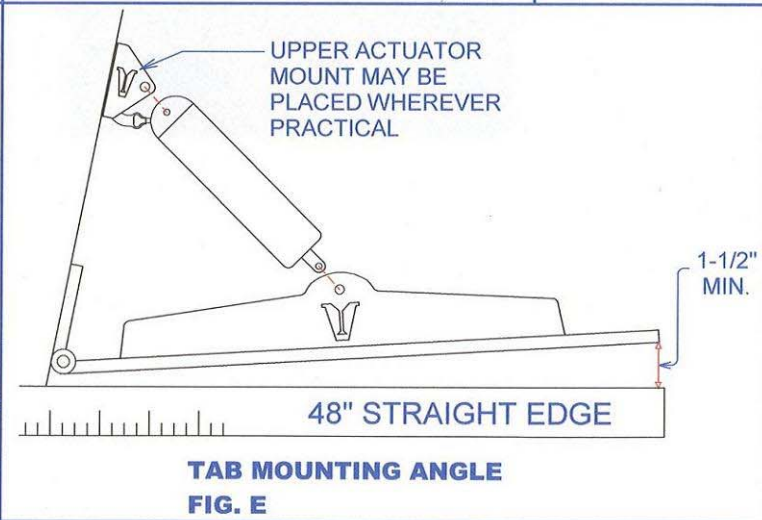
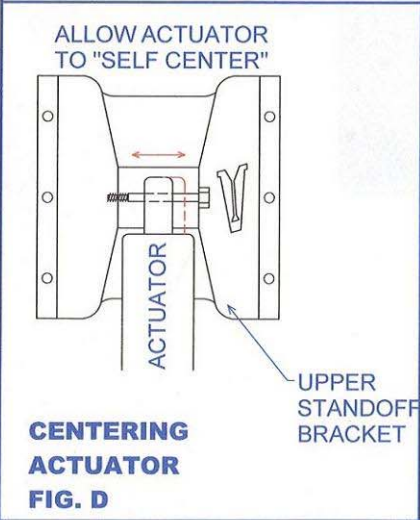
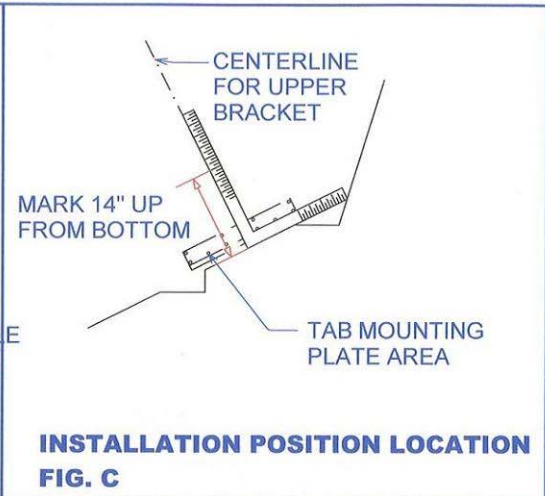
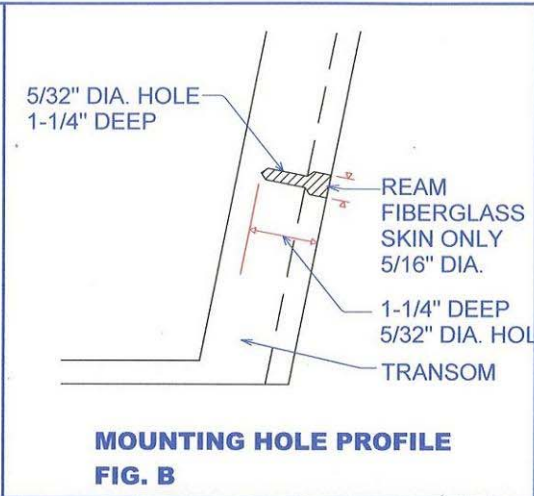
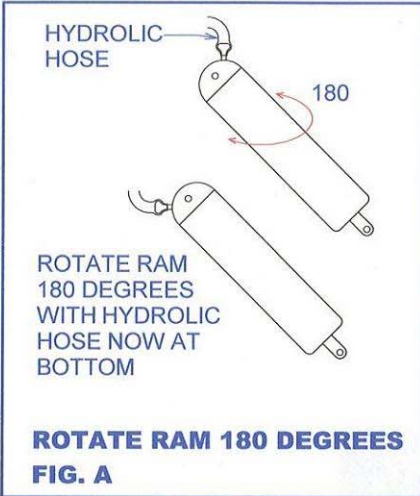
DOUBLE CHECK YOUR MEASUREMENTS BEFORE DRILLING THE UPPER STANDOFF BRACKET HOLES

- 8) Remove the upper bracket assembly from the actuators and drill the remaining holes using a 5/32" drill bit. (A slightly larger drill bit can be used if hole is found to be too tight)
- 9) Apply a small bead of sealant (3M 4200 is recommended) around each hole and coat the threads of each screw before tightening the trim tab and upper actuator bracket assemblies. Next, tighten each actuator bolt until snug.
- 10) Remove excess sealant and allow 24 hours for curing before water immersion.

MARTINIBOAT TECH LINE MON. - FRI. 7am- 7pm
519 887 8282

CAUTION

PLEASE TAKE THE TIME TO BECOME FAMILIAR WITH THE WAY **YOUR** PARTICULAR HULL REACTS TO THE NEW UPGRADES. MAKE TRIM ADJUSTMENTS IN SMALL INCREMENTS ONLY, UNTIL YOU FEEL COMFORTABLE WITH THE REACTION!



- TOOLS & MATERIALS**
- 48" STRAIGHT EDGE
 - MASKING TAPE
 - TAPE MEASURE
 - FINE TIP MARKER
 - #2 & #3 PHILLIPS SCREWDRIVER
 - 1/2" WRENCH / SOCKET
 - 5/32" DRILL BIT & DULL 5/16" DRILL BIT OR REAMER
 - ELECTRIC DRILL
 - MARINE SEALANT (3M 4200)



VICTORY TRIM TABS
NEW INSTALLATION APPLICATION
INSTATRIM DUAL ACTUATOR RETROFIT